



🏠 [PacificTattooCompany.com](http://PacificTattooCompany.com)

✉️ [Info@PacificTattooCompany.com](mailto:Info@PacificTattooCompany.com)

## Tattoo Pricing

### How much do we charge?

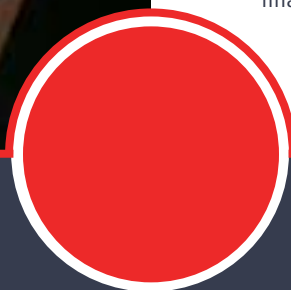
We charge a standard rate of 20,000 yen for each hour of work performed on a project. We can accept Japanese Yen or credit card payment at the conclusion of each session.

### What about small tattoos?

Horimitsu has a 50,000 yen minimum charge. The other artists 30,000 yen Anything over that amount is charged by the hour at the standard rate.

### How much is the deposit?

We require a 30,000 yen deposit to secure an appointment and this will then be deducted from the final total cost of your tattoo.



# How long will it take?

## Big Tattoos take time.

- ➔ A 3" x 3" flower would be roughly 2 hours shaded with a machine or 3 hours with tebori
- ➔ A full sleeve can take 30 to 60 hours
- ➔ A backpiece can take 40 to 100 hours
- ➔ A person's skin, the chosen technique and detail work because every person and every design is different. can all affect the time needed to complete

## Making an estimate.

The fastest way to get an estimate is to schedule a video consultation. Because every person and every design is different, deciding on elements such as technique, colour and size can help us give you a better idea of time and cost.